



ROBOPLANET

# ALTISCAN

Magnetic crawler for wall thickness measurement

## ABOUT US

**ROBOPLANET** is specialized in the manufacturing of advances NDT robotized equipment and crawlers.



**20 years of NDT projects**



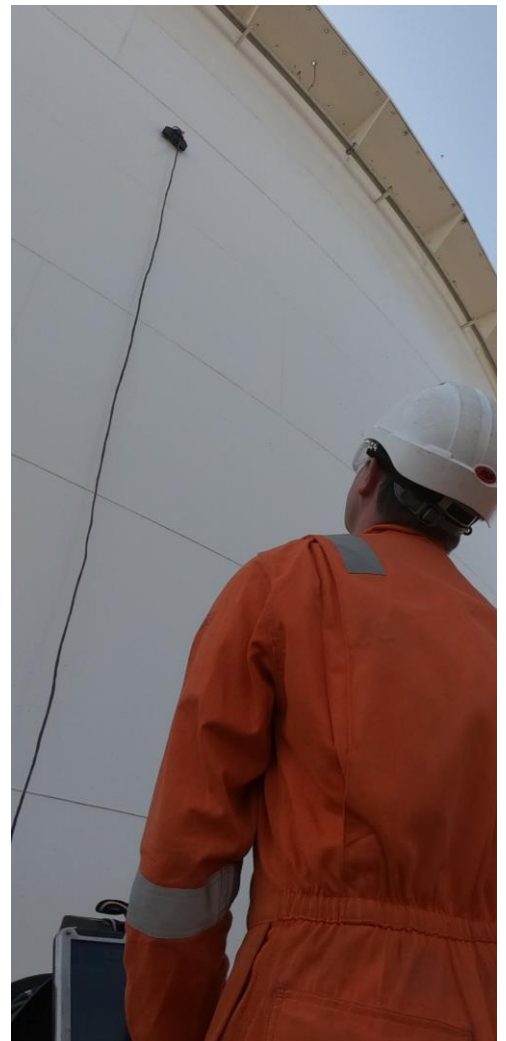
**« Significant breakthrough in the thickness measurement industry »**

**Bureau Veritas**

## APPLICATIONS

Our innovations are deployed by our clients over Europe in majors industries such as oil and gas, aeronautical, nuclear sector, extractive industry, marine and defence.

**Né du terrain, pour le terrain !**



# THE NEXT STEP FOR YOUR OPERATIONS

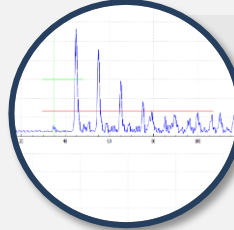
## Easier work process

Work at heights free



## Integrated Software

- High signal-on-noise ratio
- Automatized report generator



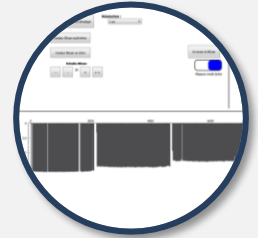
## Easy to carry around

- Single man operable
- Transportable by plane



## A-scan and B-scan

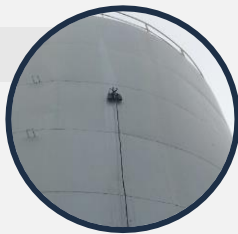
1 measure / cm



## Safe and secure

Strong magnetic wheels :

- Pull-up force : 70 Kgs
- Slipping force : 35Kgs



## Weatherproof

Operable in difficult weather conditions



## THEY TRUST ROBOPLANET



# PRODUCT FEATURES

## INSPECTED SURFACE

- Max height : 30m
- Metal : Carbon steel
- Wall temperature : from 0°C to 70°C
- Plate thickness : 3 - 50mm
- Max weld height : 10mm
- Max paint thickness : 1mm
- Minimum surface diameter : 2m

## CARRIER

- Dimensions : 35X35X20 cm
- Weight : 7kgs
- Max speed : 20cm/s - 12m/min
- Magnetics : Rare earth patented combination
- Pull-up force : 70 Kgs
- Slipping force : 35Kgs
- Water resistant
- Rugged connectors
- Encoding precision : 0.1% FS

## ULTRASONIC MEASUREMENTS

- Sensors type : Ultrasonic, dual Emission/Reception
- Standard precision : 0.1mm
- Max plate dimensions : 3 – 45 mm + coating
- Frequency/Diameter : 5Mhz/13mm
- Voltage : 0V - 200V
- Sampling frequency : 80Mhz
- Adjustable gain : 0 - 60 dB
- Visualization : A-scan, B-scan display
- Reporting : automated excel generation, A-scan & B-scan
- Post inspection data modification

## UMBILICAL

- Length : 20m - 30m
- Connectors : Military/LEMO

## WATER TANK

- Capacity : 20L
- Pumping : Batteries
- Flow : Adjustable +- 1L/min

## BATTERY

- Tension : 24V DC
- Type : Batteries
- Autonomy : 8h
- Weight : 1.5Kg

## SIGNAL PROCESSING

- Hardware : Toughbook Panasonic CF-31
- Gates : Adjustable
- Display : A-scan & B-scan, real time
- Date record : A-scan & B-scan
- Save format : .csv ; .jpg

## OPERATING CONDITIONS

- Operating temperature : from 1°C to 40°C
- Wind : <10knts
- Rain : <0,5mm average/day

